



American Pi

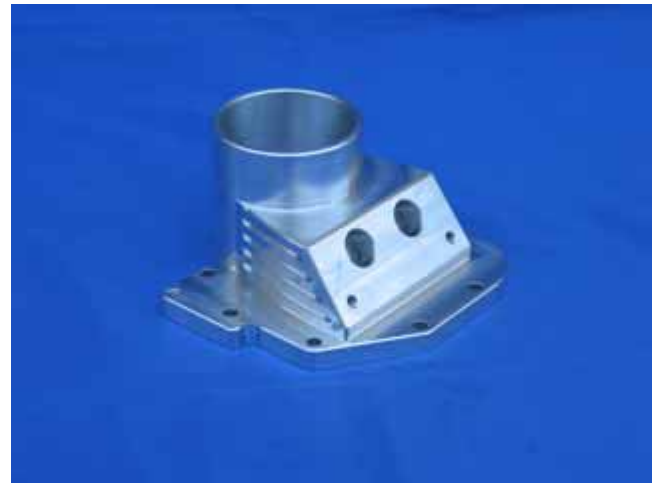
Unique Engineering, Manufacturing and Marketing

EZ-EFI Adaptors, Corvair H and HV Carburetors. The most simple, lowest cost and EZ way to install EFI on your Corvair!

This billet aluminum adaptor replaces the top of a Corvair carburetor and converts it to a quasi-throttle body injectionSM system.

The EZ-EFI adaptors are ideal to easily convert any Corvair engine to EFI. Two carb engines, four carb 140 hp engines, even blow-through turbos using H/HV carbs.

Each EZ-EFI adaptor offers provisions for two, high pressure, port injectors. The use of high pressure port injectors will give you better fuel atomization over what is available from a low pressure T.B.I. type injector.



With two injectors in each adaptor, you can run four injectors on a two carburetor engine vs. two. Four injectors allow for better low speed engine operation and light throttle running as the smaller injectors are better suited for low speed fuel control.

A four carb engine gives you the option of running four, six, or eight injectors. Of these combinations, the four and six injector layout would be typical configurations. Blanking plugs are available when running the four or six injector configuration. On the four carburetor EFI engines we suggest coupling the primary and secondary throttle shafts together. This allows for better air flow balance at low and mid-range speeds. Your four carburetor engine will show improved throttle response and power vs. the stock progressive linkage system. When running the six injector configuration, it does not matter which carburetor has the single injector or which carburetor has the twin injectors as we suggest coupling the primary and secondary throttle shafts together.

Key Features

Precision CNC machined from a solid block of aircraft quality, billet aluminum.

No engine modifications are needed! The EZ-EFI Adaptors install with less work than to rebuild a Corvair carburetor.

Any Corvair H or HV carburetor can be used! You can use a 1960 carb or even one from a 1969. It does not matter.

Any carburetor linkage can be used! Stock, aftermarket, or one of a kind custom. If it fits and works on a Corvair carburetor, it will fit and work with the EZ-EFI Adaptors.

Any air cleaner can be used! Stock, aftermarket, or one of a kind custom. If it fits on a Corvair carburetor, it will fit on the EZ-EFI Adaptors.

Any top feed injector can be used! The EZ-EFI Adaptors are designed to give you the greatest possible options of injector selection. Thousands of different injectors fit the adaptors, so you can be assured that you can select the perfect injector for your engine. Stock or a highly modified engine, you are covered.

Increase in torque vs. carburetors! The addition of EFI will generally show an increase in torque, especially at low engine speeds. The stock Corvair carburetor can be an air flow restriction to the engine and this restriction limits power. Since the discharge cluster in the carburetor is no longer needed, it can be removed. This improves the air flow through the carb as it reduces the restriction through the venturi. The increased air flow into the carb allows the engine to develop more power. Depending on the engine build, a further increase in torque may be achieved by boring out the venturi to a larger size.



Over three years in design, testing and development. We design, test and prove all of our products before offering them to other Corvair owners.

The most simple, lowest cost and EZ way to install EFI on your Corvair!

We have over twenty years experience in converting Corvairs to the benefits of EFI. Applications have been from basically stock engines with the focus of improving fuel economy, drivability and reliability, all the way to wild, highly modified engines with the goal of extracting maximum power. If you have any questions regarding upgrading your engine to EFI, we would be happy to discuss the project with you and help you select the best options for your engine.

The latest production run of the EZ-EFI Adaptors is sold out. Please contact us for additional information or if you would like to reserve your set of EZ-EFI adaptors on the next production run.

